

TRACT NO. 9024
 CONSISTING OF THREE SHEETS
 BEING A PORTION OF THE 500 ACRE
 LOT 29 OF THE PUEBLO LANDS
 AND LYING WITHIN THE CITY OF
 SAN JOSE, CALIFORNIA
 SCALE: 1"=500' SEPTEMBER, 1997



LEGEND & NOTES

- ◆ STAIRWAY CITY MONUMENT FOUND, UNLESS OTHERWISE NOTED
- STANDARD CITY MONUMENT SET (LLS NO. 3846)
- 3/4" IRON PIPE FOUND, UNLESS OTHERWISE NOTED
- 3/4" IRON PIPE SET, UNLESS OTHERWISE NOTED (LLS NO. 3058)
- P.S.E. PUBLIC SERVICE EASEMENT
- L.L. LANDSCAPE EASEMENT

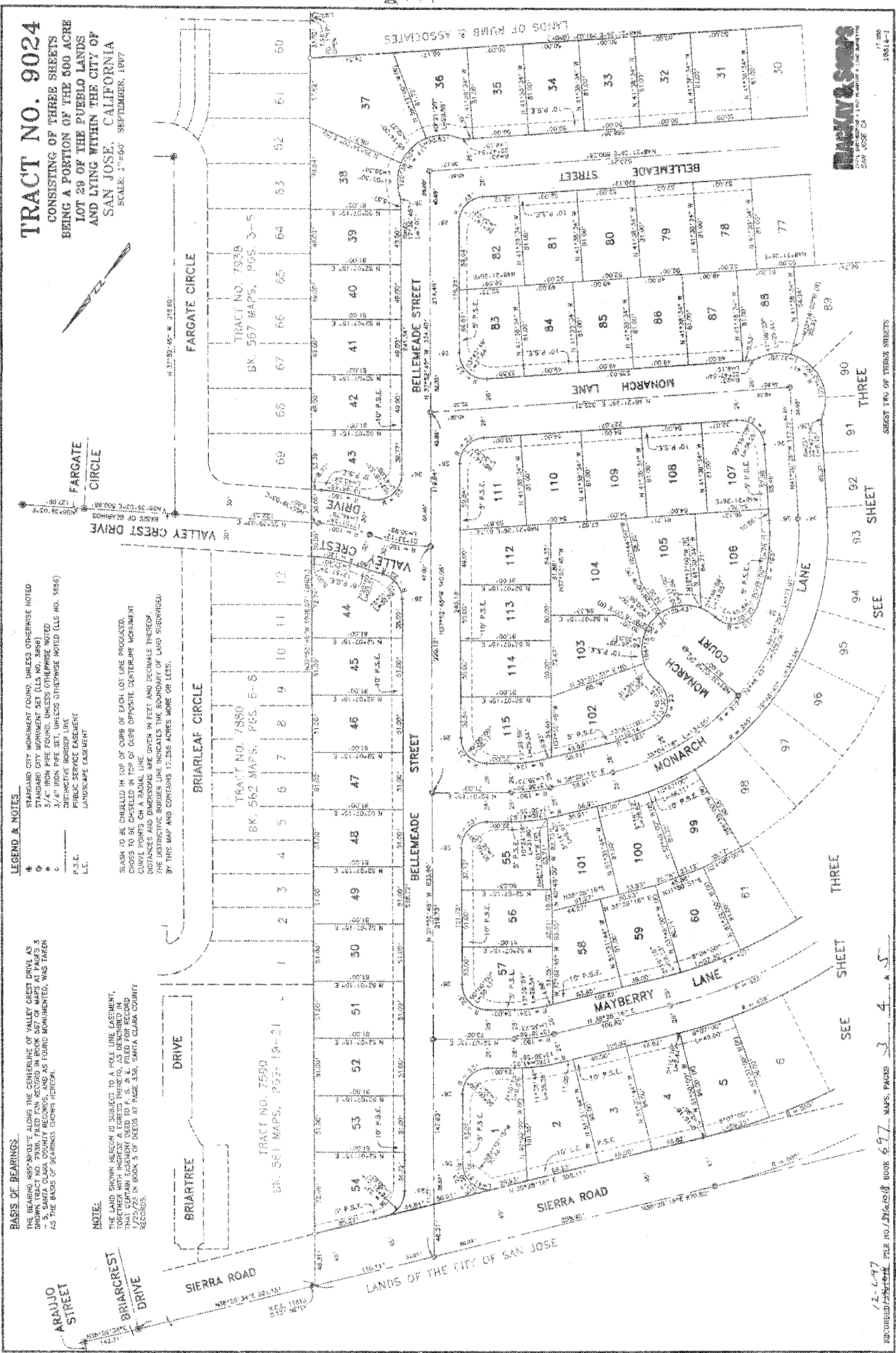
BLK. TO BE CHASED IN TOP OF CURB OF EACH LOT LINE PROCEEDED.
 CROSS TO BE CHASED IN TOP OF CURB OPPOSITE CENTERLINE MONUMENT
 CURVE POINTS ON A RADIAL LINE.
 DISTANCES AND DIMENSIONS ARE GIVEN IN FEET AND DECIMALS THEREOF.
 THE DASHED BORDER LINE INDICATES THE BOUNDARY OF LAND SUBDIVIDED
 BY THIS MAP AND CONTAINS 17.256 ACRES MORE OR LESS.

BASES OF BEARINGS

THE BEARING AND DISTANCE ALONG THE CENTERLINE OF VALLEY CREST DRIVE AS SHOWN TRACT NO. 7938, FILED FOR RECORD IN BOOK 367 OF MAPS AT PAGE 2 & 3, SANTA CLARA COUNTY RECORDS, AND AS FOUND MONUMENTED, WAS TAKEN AS THE BASIS OF BEARINGS.

NOTE:

THE SAN JOSE REGION IS SUBJECT TO A FIRE LINK EASEMENT, IDENTIFIED WITH INCREASED EASEMENT NUMBER 03, AS DESCRIBED IN THAT CERTAIN EASEMENT OED TO F. G. & E. FILED FOR RECORD 1/25/75 IN BOOK 5 OF DEEDS AT PAGE 338, SANTA CLARA COUNTY RECORDS.



PLAT & SURVEY
 2024 SEPTEMBER 1997
 SAN JOSE, CA

RECORDED IN PLAT BOOK 697, MAPS, PAGES 3, 4 & 5
 12-1-97

TRACT NO. 9024
 CONSISTING OF THREE SHEETS
 BEING A PORTION OF THE 600 ACRE
 LOT 29 OF THE PUEBLO LANDS
 AND LYING WITHIN THE CITY OF
 SAN JOSE, CALIFORNIA
 SCALE: 1"=60' SEPTEMBER, 1997

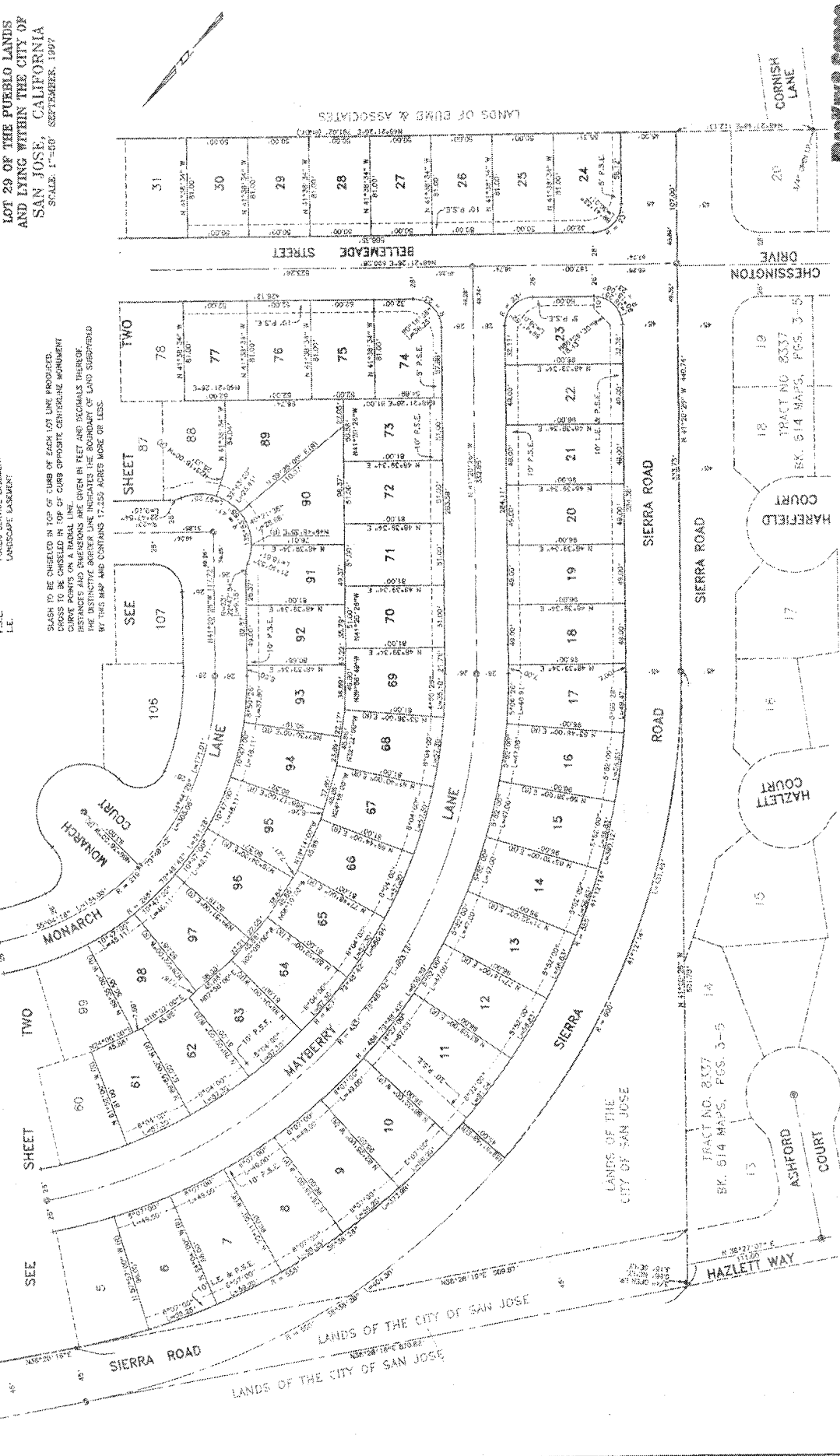
- LEGEND & NOTES**
- STANDARD CITY MONUMENT FOUND, UNLESS OTHERWISE NOTED
 - STANDARD CITY MONUMENT SET (I.L.S. NO. 3866)
 - 3/4" IRON PIPE FOUND, UNLESS OTHERWISE NOTED
 - 3/4" IRON PIPE SET, UNLESS OTHERWISE NOTED (I.L.S. NO. 3866)
 - SETTING POINT FOR MONUMENT
 - PUBLIC SERVICE CASHEM
 - LANDSCAPE CASHEM
 - P.S.E. PUBLIC SERVICE EASEMENT
 - L.E. LANDSCAPE EASEMENT

SLASH TO BE CHECKED IN TOP OF CURB OF EACH LOT LINE PRODUCED.
 CROSS TO BE CHECKED IN TOP OF CURB OPPOSITE CENTERLINE MONUMENT
 CURVE POINTS ON A RADIAL LINE.
 DISTANCES AND BEARINGS ARE GIVEN IN FEET AND DECIMALS THEREOF.
 THE DISTINCTIVE SHORTER LINE INDICATES THE LOCATION OF LAND SUBDIVISION
 BY THIS MAP AND CONTAINS 17,000 SQUARE FEET OR LESS.

NOTE:
 THE LAND SHOWN HEREON IS SUBJECT TO A PAVE LANE EASEMENT,
 WHICH MAY BE AFFECTED BY THE CITY OF SAN JOSE, CALIFORNIA,
 THAT CERTAIN EASEMENTS DEDICATED TO P. G. & E. FILED FOR RECORD
 1/23/23 IN BOOK 5 OF DEEDS AT PAGE 136, SANTA CLARA COUNTY
 RECORDS.

NOTE:
 THE BEARING PHOTOGRAPHY ALONG THE CENTRELINE OF VALLEY CREEK DRIVE AS
 SHOWN ON MAP NO. 8337, TRACT NO. 8337, SAN JOSE, CALIFORNIA, COUNTY RECORDS,
 AS THE BASIS OF BEARINGS SHOWN HEREON.

NOTE:
 THE BEARING PHOTOGRAPHY ALONG THE CENTRELINE OF VALLEY CREEK DRIVE AS
 SHOWN ON MAP NO. 8337, TRACT NO. 8337, SAN JOSE, CALIFORNIA, COUNTY RECORDS,
 AS THE BASIS OF BEARINGS SHOWN HEREON.



DICKINSON & SONS
 SAN JOSE, CALIFORNIA
 13 2ND
 13161411

RECORDED 2/2/97 FILE NO. 2316 1018 BOOK 697 MAPS PAGES 3 4 & 5
 SHEET THREE OF THREE SHEETS